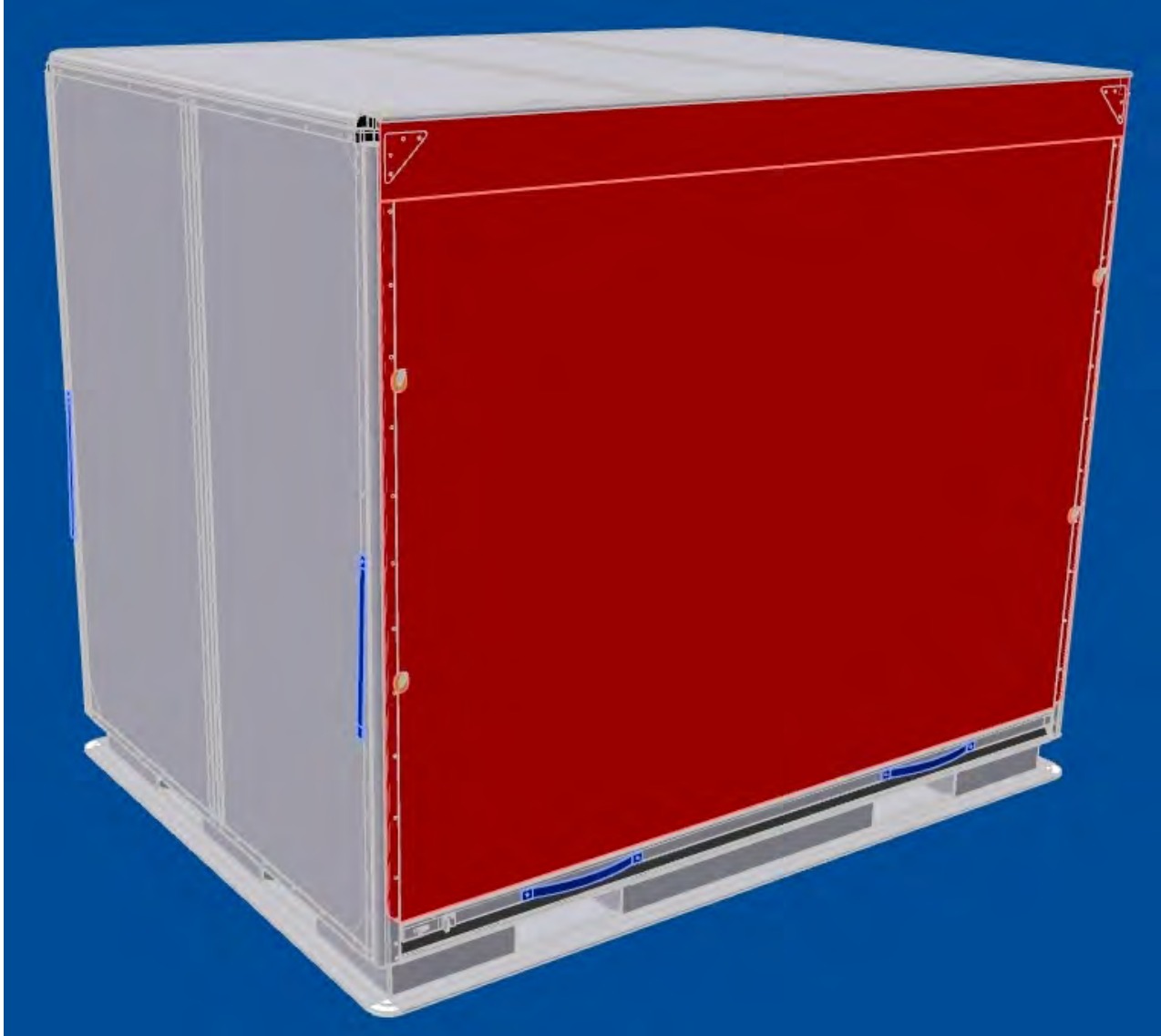


Forkliftable Fabric Door Ground Container



TECHNICAL SPECIFICATIONS FORKLIFTABLE FABRIC DOOR GROUND CONTAINER

Nordisk P/N	21693-1()	
Internal volume	217 cu ft	6.15 cu m
External volume	234 cu ft	6.62 cu m
Door opening	80.2 x 66.9 in	2038 x 1700 mm
Base size	65.0 x 86.6 in	1650 x 2200 mm
Height	74.8 in	1900 mm
Tare weight	366 lb	166 kg
Max. gross weight	3307 lb	1500 kg

Construction

Forkliftable Base	Upper Base Sheet	7021-T6 3.0mm
	Lower Base Sheet	7021-T6 3.0mm
	Edge Rail Extrusion	7003-T6
	Corner	2 inches radius
	Fastener (Upper Base Sheet to Edge Rail)	Countersunk stainless steel rivet
	Forklift Entry	4-way
Body	Framework Extrusion	7003-T6
	Panel	5754-H26 0.8mm
	Fastener	Aluminum blind rivet
Door	Framework Extrusion	7003-T6
	Door	Canvas
	Fabric door with metal bar at the bottom and 2 hooks each on left and right doorpost.	
Stiffener	Roof	2 each
	Aft	2 each
	Left	1 each
	Right	1 each
Gusset	Non-welded container framework design container, all connecting corners with gusset.	
Tie down	Internal	- 2 each on aft side - 2 each on left side - 2 each on right side

Additional Information

Flammability	FAR 25.852	Burning rate less than 2.5 in/min
Remarks	- 2 each handle strap on left and right sides - A separate Certification of Compliance included when delivery the container - A separate Component Maintenance Manual with Illustrated Parts List included when delivery the container	